

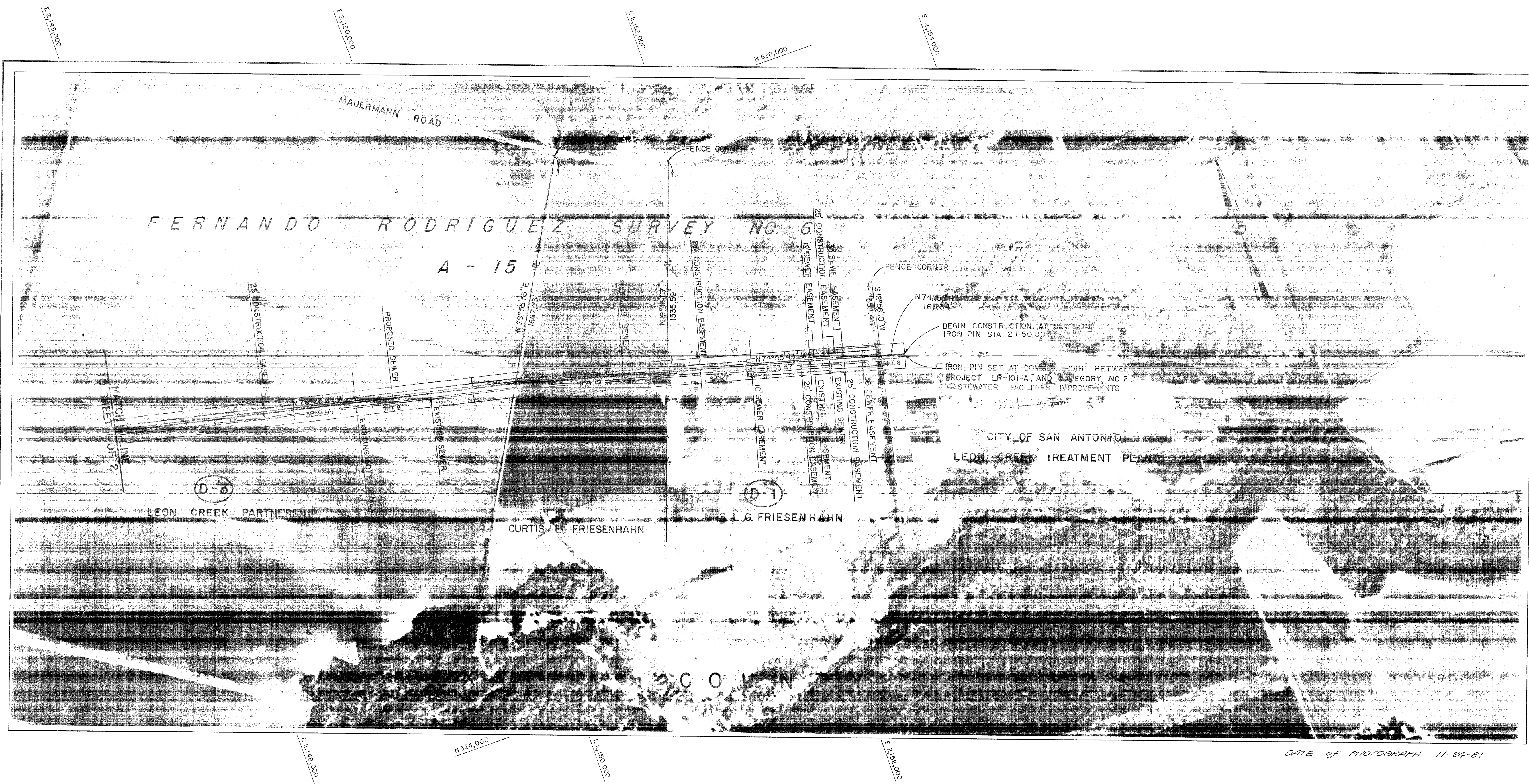
Date: Nov. 10, 1982  
 Designed by R.H.L.  
 Drawn by F.C.  
 Checked by L.G.H.  
 Scale 1" = 400'

*John R. Williams*

WASTEWATER FACILITIES IMPROVEMENTS  
 SAN ANTONIO

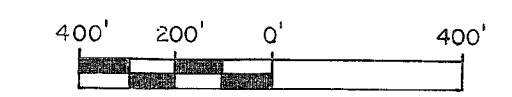
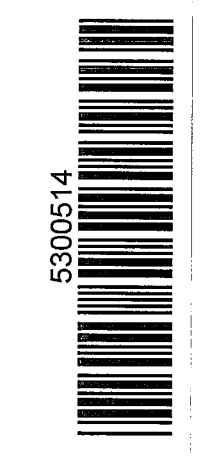
LOCATION MAP AND SHEET INDEX, PART 2 OF 2  
 CATEGORY NO. 4 PACKAGE D LR-101 PART A

Sheet 3 of 26



PLAN OF RECORD  
 MARCH 1986

TRACT No.	D-3	D-2	D-1	-
OWNER	LEON CREEK PARTNERSHIP	CURTIS E. FRIESENHAHN	MRS L.G. FRIESENHAHN	CITY OF SAN ANTONIO
VOL./PG., AREA		6603/63, 99.55 Ac.	6603/63, 139.55 Ac.	
EXISTING EASEMENT, VOL./PG., PARCEL	(SEE SHEET 1 OF 2)	PART OF 5/893, E-568	PART OF 5/893, E-568	
EXISTING EASEMENT AREA	"	1.271 Ac.	1.785 Ac.	
CONSTRUCTION EASEMENT AREA	"	0.632 Ac.	1.453 Ac.	
REQ'D. ADD'L. EASEMENT AREA	"		0.872 Ac.	





E 2,153,750

E 2,153,500

N 525,500

E 2,153,250

E 2,153,000

Job No. 5065

Revisions

DATE

NO.

NOV 10, 1982

DESIGNED BY: R.H.L.

DRAWN BY: F.C./J.V.

CHECKED BY: C.R.H.

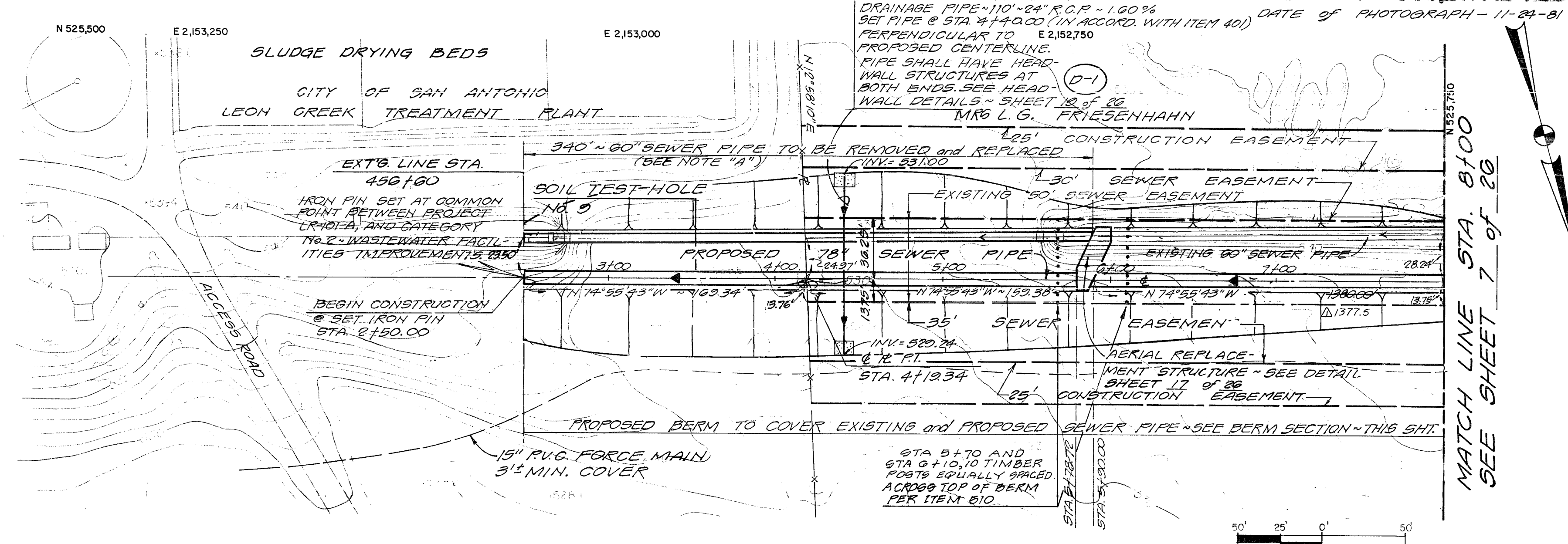
SCALE

HORIZ: 1" = 5'

VERT: 1" = 5'

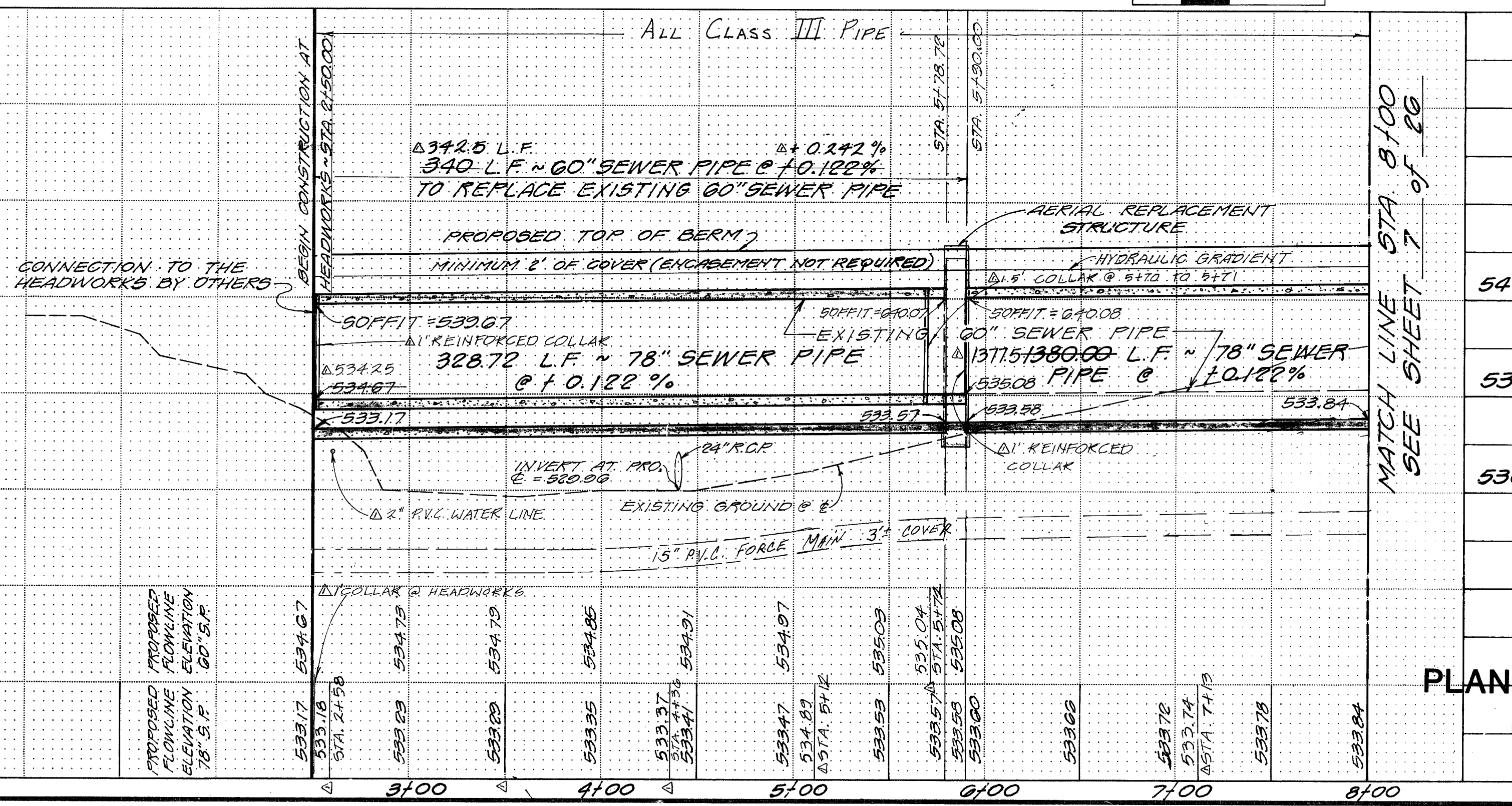
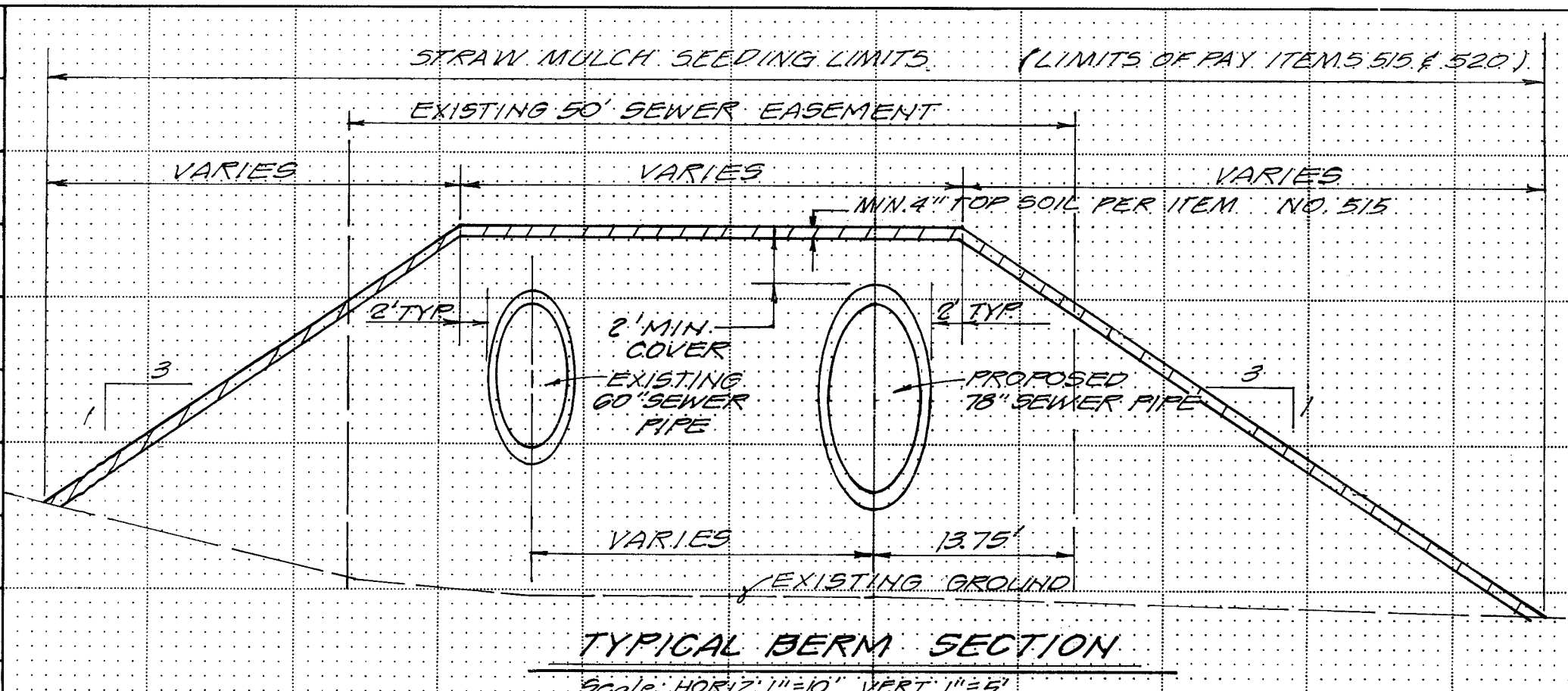
CONSULTING ENGINEERS

NOTE "A":  
 (AS PER ADDENDUM NO. 1, 4.0, C.)  
 THE AERIAL REPLACEMENT STRUCTURE AND THE SEGMENT OF 78" SEWER PIPE FROM THE HEADWORKS TO THE AERIAL REPLACEMENT STRUCTURE SHALL BE COMPLETED, AND FLOW DIVERTED THROUGH THEM BEFORE THE AERIAL SEWER IS REMOVED TESTED AND ACCEPTED BEFORE THE FLOW IS DIVERTED AND THE AERIAL SEWER IS REMOVED AND REPLACED. STRUCTURE DOWNSTREAM MAY NOT BE COMPLETE AND THE CONTRACTOR SHALL NOT DIVERT FLOW WITHOUT THE APPROVAL OF THE ENGINEER. IT IS ANTICIPATED, HOWEVER, THAT THE STRUCTURE WILL BE COMPLETE BY THE TIME CONSTRUCTION BEGINS OR SHORTLY THEREAFTER.



MATCH LINE STA. 8+00  
 SEE SHEET 7 OF 20

VERTICAL CONTROL POINT: CDM #1  
 ELEVATION: 536.70  
 LOCATION: ON TOP OF THE SCUM BOX WALL BETWEEN PRIMARY CLARIFIERS #1 AND #2 AT THE LEON CREEK WASTEWATER TREATMENT PLANT.



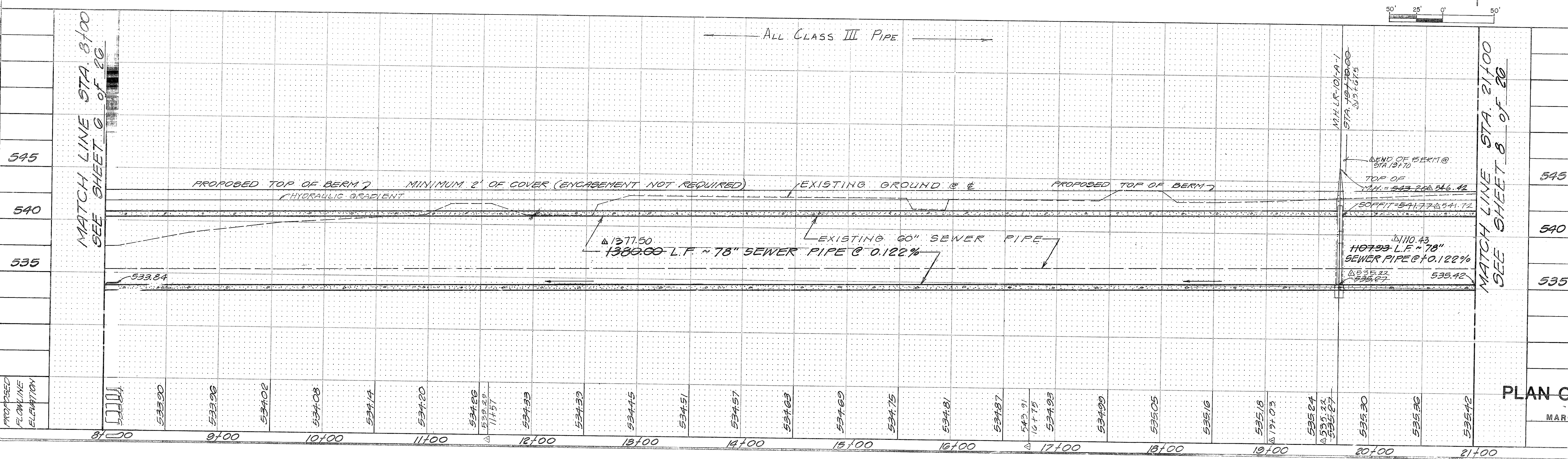
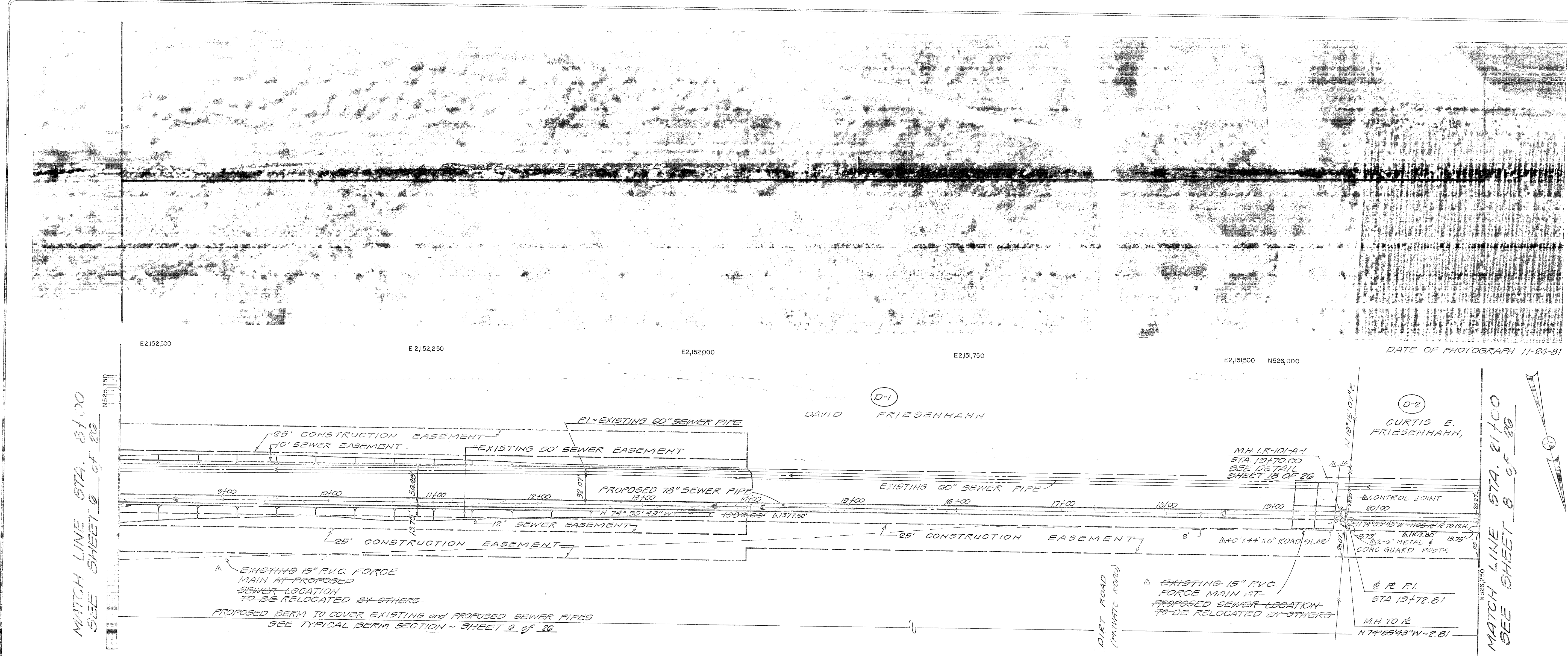
MATCH LINE STA. 8+00  
 SEE SHEET 7 OF 20

PLAN OF RECORD

PLAN AND PROFILE FOR  
 SANITARY SEWER OUTFALL LINE  
 STA. 2+50 TO STA. 8+00  
 CATEGORY NO. 4 PACKAGE D  
 LR-101 PART A

MARCH 1986 6  
 of 26



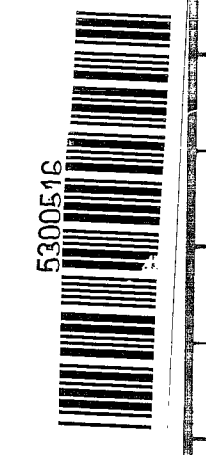


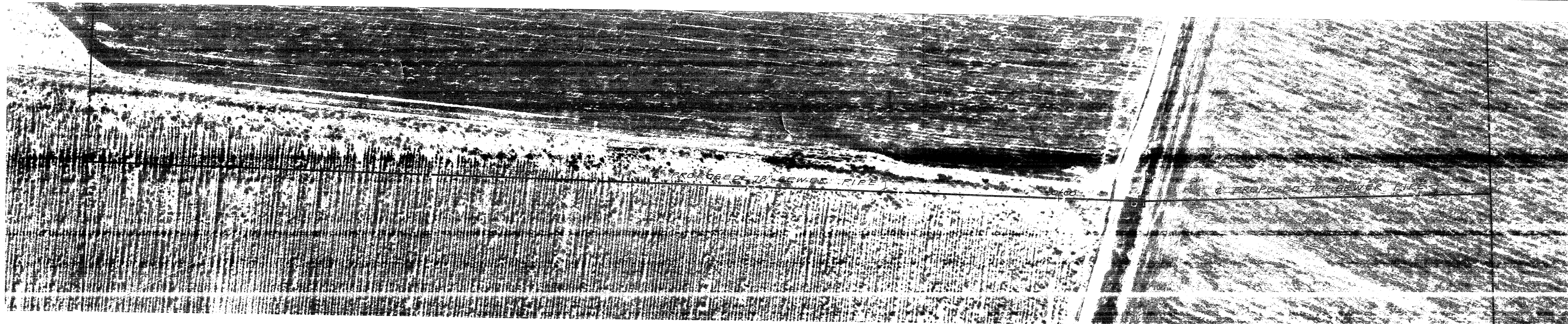
WESTWATER FACILITIES IMPROVEMENTS  
 SAN ANTONIO

PLAN AND PROFILE FOR  
 SANITARY SEWER OUTFALL LINE  
 STA. 8+00 TO STA. 21+00  
 CATEGORY NO. 4 PACKAGE D  
 LR-101 PART A

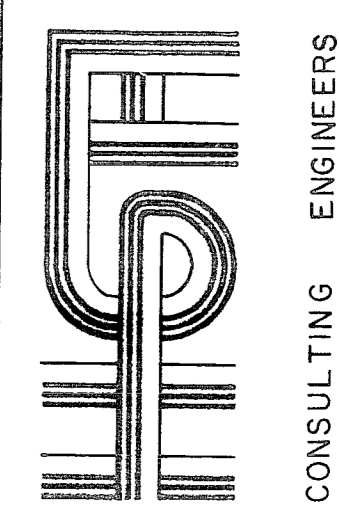
535	535
540	540
545	545

MAR 28 1983  
 of 26



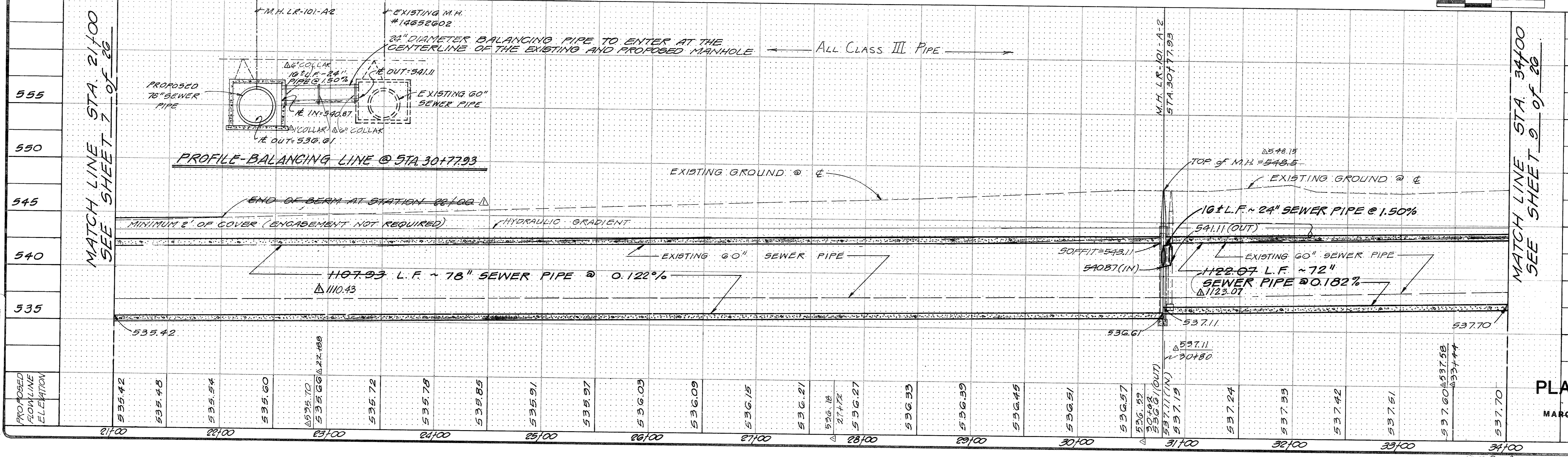
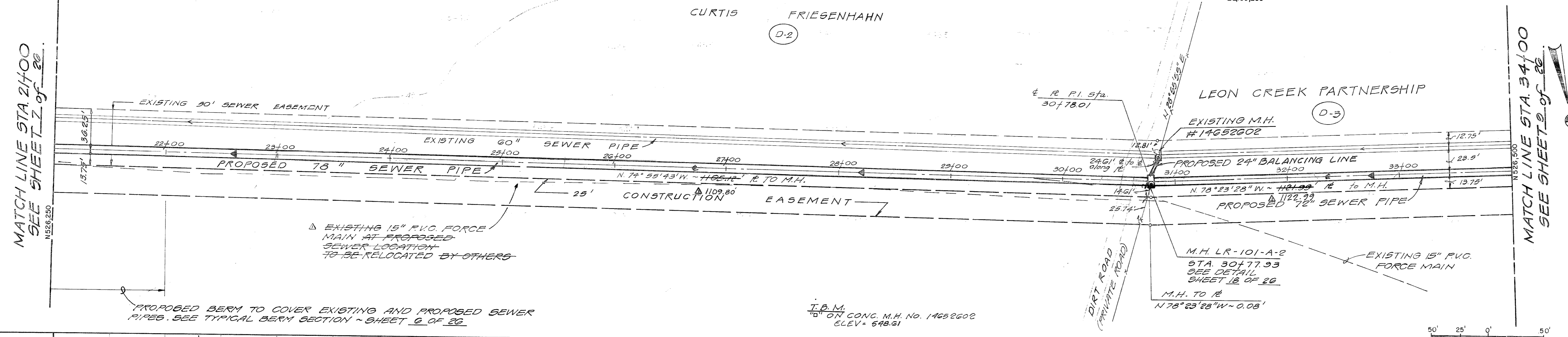


JOB No. 5065  
 DATE: NOV 10, 1982  
 DESIGNED BY: R.H.L.  
 DRAWN BY: F.C./J.V.  
 CHECKED BY: C.R.H.  
 SCALE: HORIZ: 1"=50'  
 VERT: 1"=5'  
 AS BUILT DATA  
 Revisions  
 No. Date  
 App.



CONSULTING ENGINEERS

E2151,250      E2151,000      E2150,750      E2150,500      E2150,250      DATE OF PHOTOGRAPH 11-24-81



MATCH LINE STA. 34+00  
SEE SHEET 9 of 26

MATCH LINE STA. 21+00  
SEE SHEET 7 of 26

**PLAN OF RECORD**

MARCH 1986  
Sheet 8 of 26

PLAN AND PROFILE FOR  
 SANITARY SEWER OUTFALL LINE  
 STA. 21+00 TO STA. 34+00  
 CATEGORY NO. 4 PACKAGE D  
 LR-101 PART A

**San Antonio**  
 WASTEWATER  
 FACILITIES  
 IMPROVEMENTS

Leon Creek Partnership  
 D-3



4313 A